

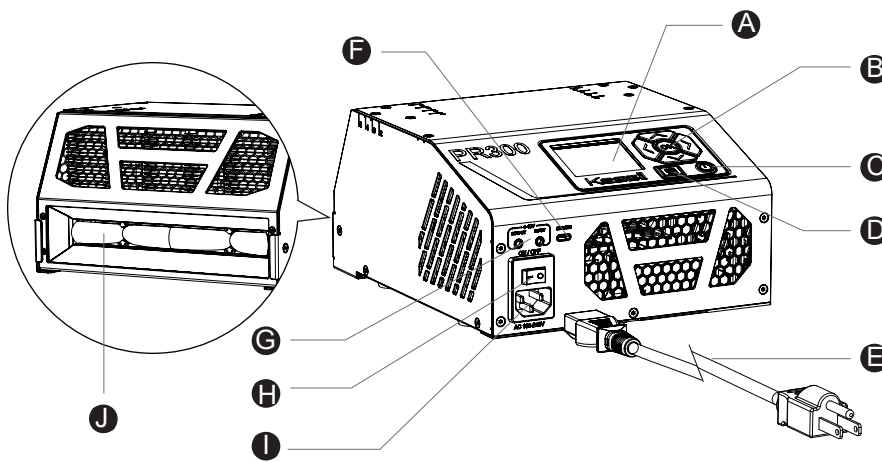
Kessil®

PR300

USER MANUAL



PARTS DIAGRAM



- A** LCD Screen
- B** Navigation Pad
- C** Pause Button
- D** Menu Button
- E** Power Cable
- F** USB Type-C Port
- G** Multi-Unit Link Port
- H** Main Power Switch
- I** AC Input Port
- J** Protective Glass

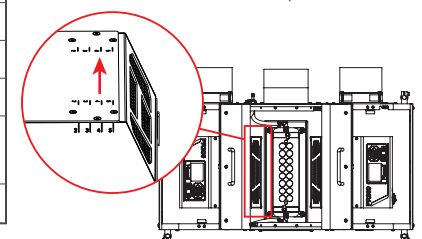
INSTALLATION GUIDE

1. Carefully take out the contents from the package.
2. Remove the adhesive film from the Protective Glass (J) before use. Clean periodically.
3. Connect the Power Cable (E) to the AC Input Port (I).
4. Plug the power supply into an outlet with the correct voltage specifications (see product specifications for more information).
5. Flip the Main Power Switch (H) to turn PR300 on and off, use the Navigation Pad (B) to change settings shown on the LCD Screen (A), and press the Menu Button (D) to return to Home Screen anytime without stopping the current step or program.
6. Press the Pause Button (C) to immediately pause and turn the light off anytime.
7. Plug the provided 3.5mm cables into the Multi-Unit Link Port (G) to sync multiple PR300 units.
8. Connect PR300 to a computer through the USB Type-C Port (F). Does not need to be connected to a computer to run.

PRODUCT SPECIFICATIONS

Power Consumption	MAX 340W
Input Voltage	100 - 240 VAC
Irradiation Distance*	20mm - 50mm
Wavelength Options	370nm, 390nm, 427nm, 440nm, 456nm, 467nm, 525nm
Average Intensity of PR300 (measured at 20mm from Protective Glass)	745 mW/cm ² (370nm, 390nm) 800 mW/cm ² (other wavelengths)
Dimensions (W x L x H)	7.9" x 9.3" x 4.5" / 20.0cm x 23.6cm x 11.5cm

* From Protective Glass to vials placed in the Tank



WARNING & SAFETY INSTRUCTIONS

1. CONTAINS HIGH INTENSITY LIGHT
2. SOME MODELS HAVE ULTRAVIOLET (UV) LIGHT
3. DO NOT LOOK DIRECTLY AT LIGHT
4. AVOID EYE & SKIN EXPOSURE. WEAR PROPER EYE & SKIN PROTECTION
5. DO NOT OPERATE IN WET OR HUMID ENVIRONMENT
6. DO NOT BLOCK AIR VENTS. ALLOW FOR COOLING
7. DO NOT MODIFY FIXTURE OR PARTS IN ANY WAY
8. OPERATING TEMPERATURE 0 - 40°C (32 - 104°F)
9. ONLY USE SUPPLIED POWER SUPPLY AND WITHIN RATINGS
10. INSTALL PROTECTIVE GLASS BEFORE USE AND KEEP SURFACE CLEAN. REMOVE AND PUT BACK INTO PACKAGE BEFORE SHIPPING
11. ALWAYS KEEP PR300 UPRIGHT TO PREVENT PROTECTIVE GLASS FROM SLIDING
12. DO NOT STARE AT THE OPERATING LIGHT SOURCE



13. FOR TYPE X ATTACHMENTS HAVING A SPECIALLY PREPARED CORD: "IF THE EXTERNAL FLEXIBLE CABLE OR CORD OF THIS LUMINAIRE IS DAMAGED, IT SHALL BE REPLACED BY A SPECIAL CORD OR CORD EXCLUSIVELY AVAILABLE FROM THE MANUFACTURER OR HIS SERVICE AGENT."
14. FOR INDOOR USE ONLY.
15. THE LIGHT SOURCE OF THIS LUMINAIRE IS NOT REPLACEABLE; WHEN THE LIGHT SOURCE REACHES ITS END OF LIFE THE WHOLE LUMINAIRE SHALL BE REPLACED.

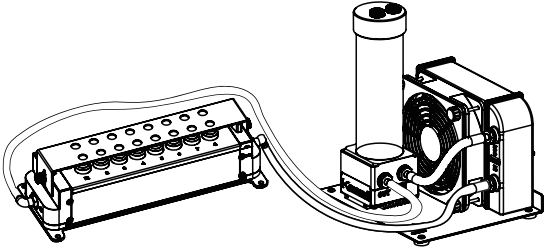
AVERTISSEMENTS ET CONSIGNES DE SÉCURITÉ

1. CONTIENT UNE LUMIÈRE DE HAUTE INTENSITÉ
2. CERTAINS MODÈLES SONT DOTÉS D'UNE LUMIÈRE ULTRAVIOLETTE (UV)
3. NE REGARDEZ PAS DIRECTEMENT LA LUMIÈRE
4. ÉVITEZ L'EXPOSITION DES YEUX ET DE LA PEAU. PORTEZ UNE PROTECTION APPROPRIÉE DES YEUX ET DE LA PEAU
5. NE PAS UTILISER DANS UN ENVIRONNEMENT HUMIDE OU HUMIDE
6. NE BLOQUEZ PAS LES OUVERTURES D'AÉRATION. PERMETTRE LE REFROIDISSEMENT
7. NE MODIFIEZ PAS LE LUMINAIRE OU LES PIÈCES DE QUELQUE MANIÈRE QUE CE SOIT
8. TEMPÉRATURE DE FONCTIONNEMENT 0 - 40°C (32 - 104°F)
9. UTILISEZ UNIQUEMENT L'ALIMENTATION ÉLECTRIQUE FOURNIE ET DANS LES LIMITES DES VALEURS NOMINALES
10. INSTALLER LE VERRE DE PROTECTION AVANT UTILISATION ET GARDER LA SURFACE PROPRE. RETIRER ET REMETTRE DANS L'EMBALLAGE AVANT L'EXPÉDITION
11. TOUJOURS GARDEZ LE PR300 EN POSITION VERTICALE POUR ÉVITER QUE LE VERRE DE PROTECTION NE GLISSE
12. NE PAS FIXER LA SOURCE LUMINEUSE EN FONCTIONNEMENT.

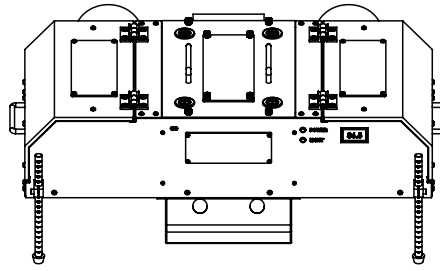


13. POUR LES ACCESSOIRES DE TYPE X DOTÉS D'UN CORDON SPÉCIALEMENT CONÇU : "SI LE CÂBLE FLEXIBLE EXTERNE DE CE LUMINAIRE EST ENDOMMAGÉ, IL DOIT ÊTRE REMPLACÉ PAR UN CORDON SPÉCIAL DISPONIBLE EXCLUSIVEMENT AUPRÈS DU FABRICANT OU DE SON SERVICE APRÈS-VENTE."
14. POUR USAGE INTÉRIEUR UNIQUEMENT.
15. LA SOURCE LUMINEUSE DE CE LUMINAIRE N'EST PAS REMPLAÇABLE ; LORSQUE LA SOURCE LUMINEUSE ATTEINT SA FIN DE VIE, LE LUMINAIRE ENTIER DOIT ÊTRE REMPLACÉ.

OPTIONAL ACCESSORIES



PR300 Water Cooling System



PR300 Shielding Box

MAINTENANCE

1. Keep the venting holes and fan free of dust. To clean, unplug the unit and use a CO2 dust blower (or similar tool) to gently clean through the venting holes. Alternatively, you can use a vacuum to remove dust.
2. Keep the Protective Glass (J) clean. If it becomes contaminated with water, dust, or other particles, unplug the unit and gently wipe the glass cover with a cotton swab or cloth dampened with isopropyl alcohol. Allow to dry completely before using the unit again.

TROUBLESHOOTING GUIDE

Problem	Solution
Light doesn't turn ON	Make sure the unit is connected to the power supply and the power supply is plugged into an outlet with the correct specifications.
	Confirm that the AC outlet being used provides electrical power.
	Verify that the power supply meets the required specifications.
	Make sure the device is operating within the specified temperature range 0 - 40°C (32 - 104°F). If the unit overheats, it will shut down automatically.
Unit is flickering	Verify that the power supply meets the required specifications.
	Make sure the unit has not overheated by operating and that the operating temperature does not exceed 40°C (104°F).
	Confirm that the fan is operating properly.

INSTRUCTIONS

Button Function



Press
Up/Down Move



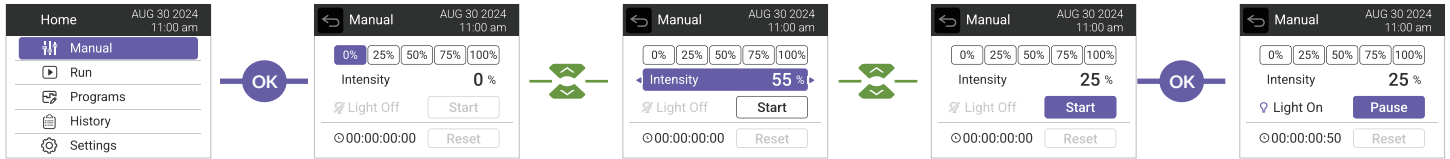
Press
Left/Right Move



Press
Confirm

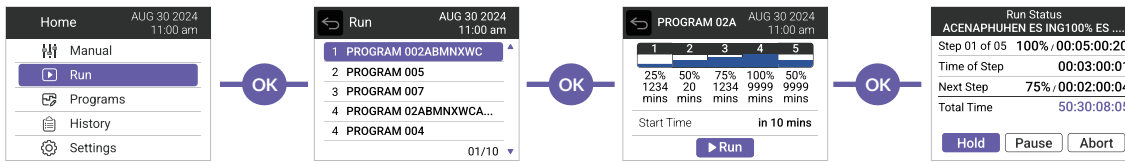
Manual

1. Navigate to set the Intensity. Press OK to confirm.
2. Move down to "Start" and press OK to start the timer and turn on the light at the chosen intensity level.
3. Press OK on "Pause" to pause the timer and turn off the light anytime. Select "Resume" to turn the timer and light back on.



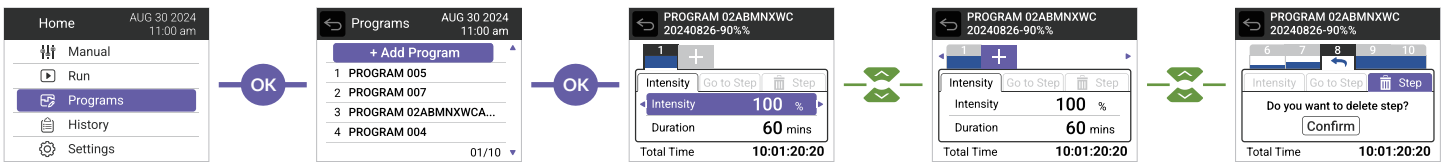
Run

1. Press OK to select the desired program name.
2. Navigate to view the program details and move left/right to go to the next/previous page.
3. Move down to adjust the "Start Time", then press OK on "Run" to start the program.
4. Press "Hold" to hold this step and keep light on (timer continues); press "Pause" to hold this step and keep light on (timer pauses); press "Abort" to end the program.



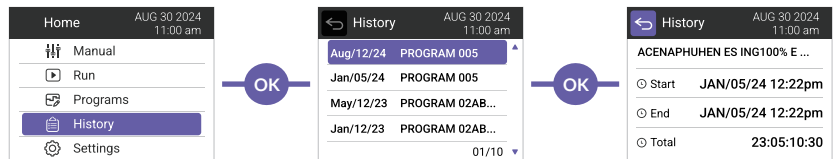
Programs

1. Press OK on "Add Program" to add a new program.
2. Adjust Intensity and Duration using the navigation pad.
3. Add a new step by clicking "+" icon.
4. Use "Go to Step" to repeat specific steps in sequence for a specified number of cycles.
5. Select "Step" to delete the current step.



History

1. Move up/down the list of program names with the last run date.
2. Press OK to view the last run details.



Settings

1. Move up/down to select the menu.
2. Press OK to enter a setting and move left/right to adjust the values.

